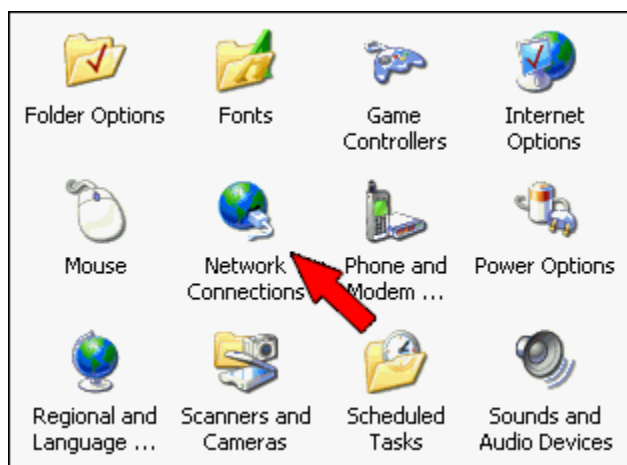


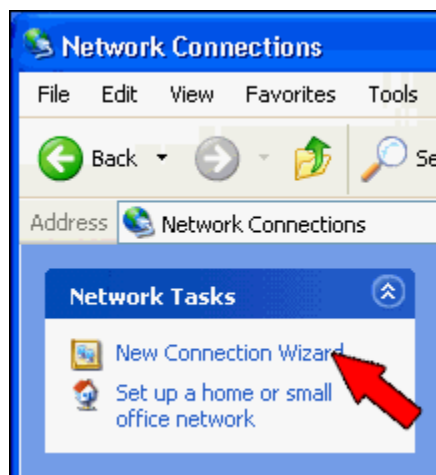
## Uputstvo za podesavanje konekcije na vasem racunaru

Za pristup putem 042 mreze potrebno je da na kompjuteru imate modem i da znate kako da kreirate novu konekciju, a mi cemo vam u tome pomoci sa ovim uputstvom!

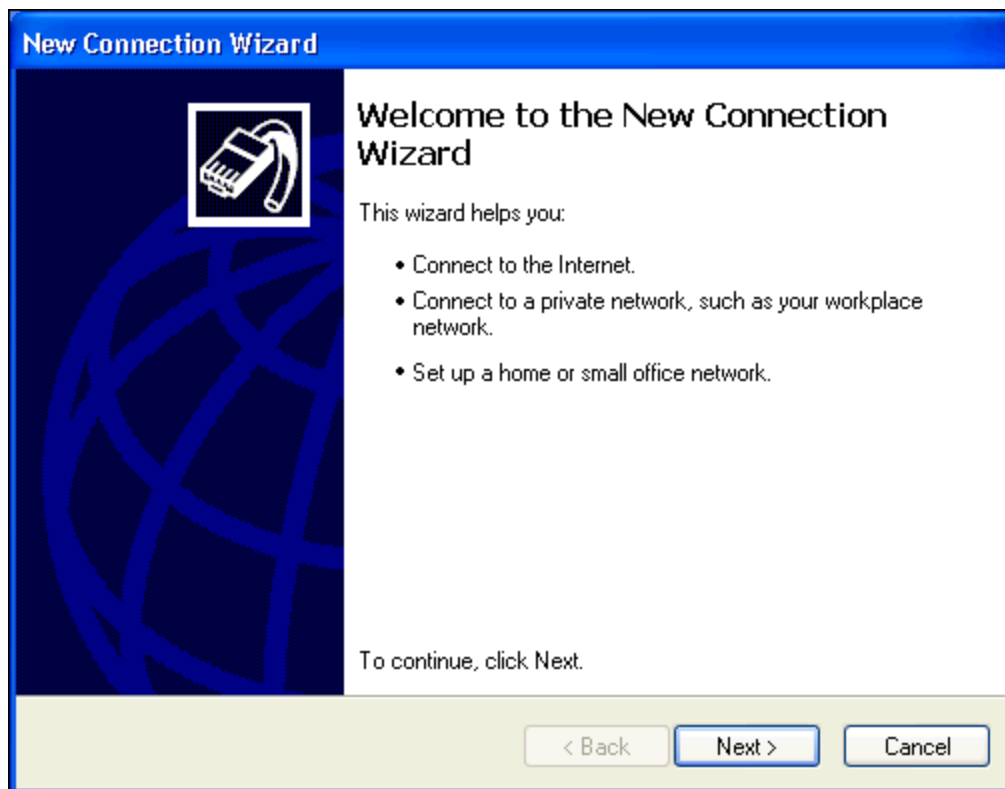
Za pocetak, udjite u Control Panel pa u Network Connections



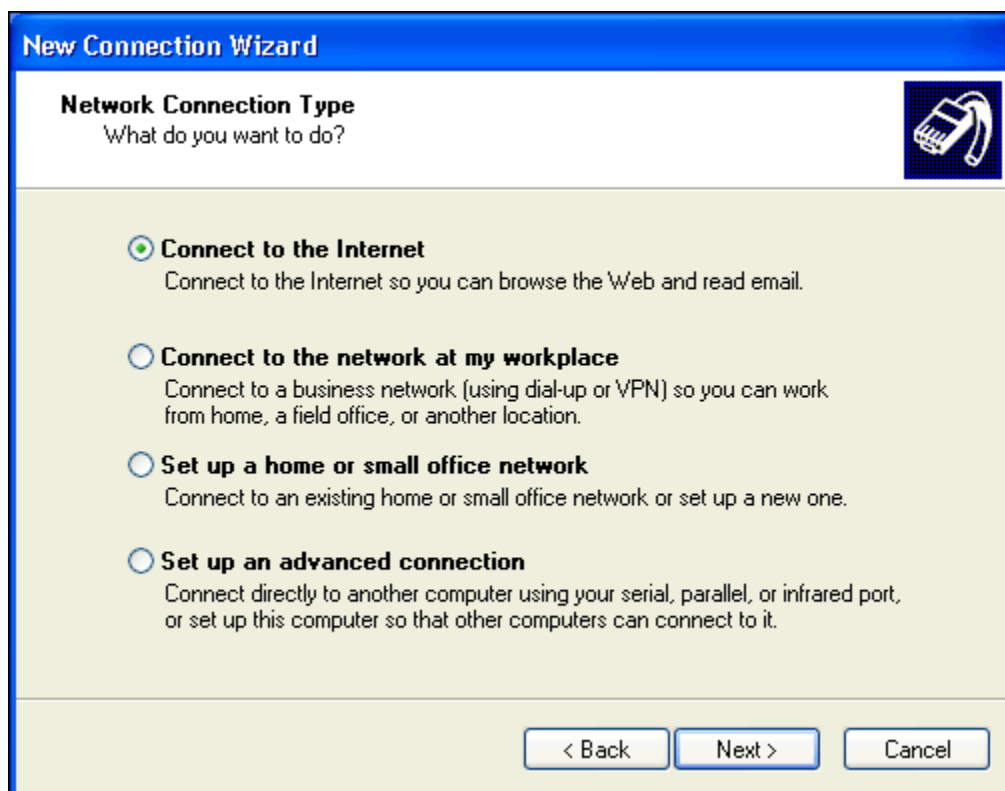
Zatim kliknite na New Connection Wizard



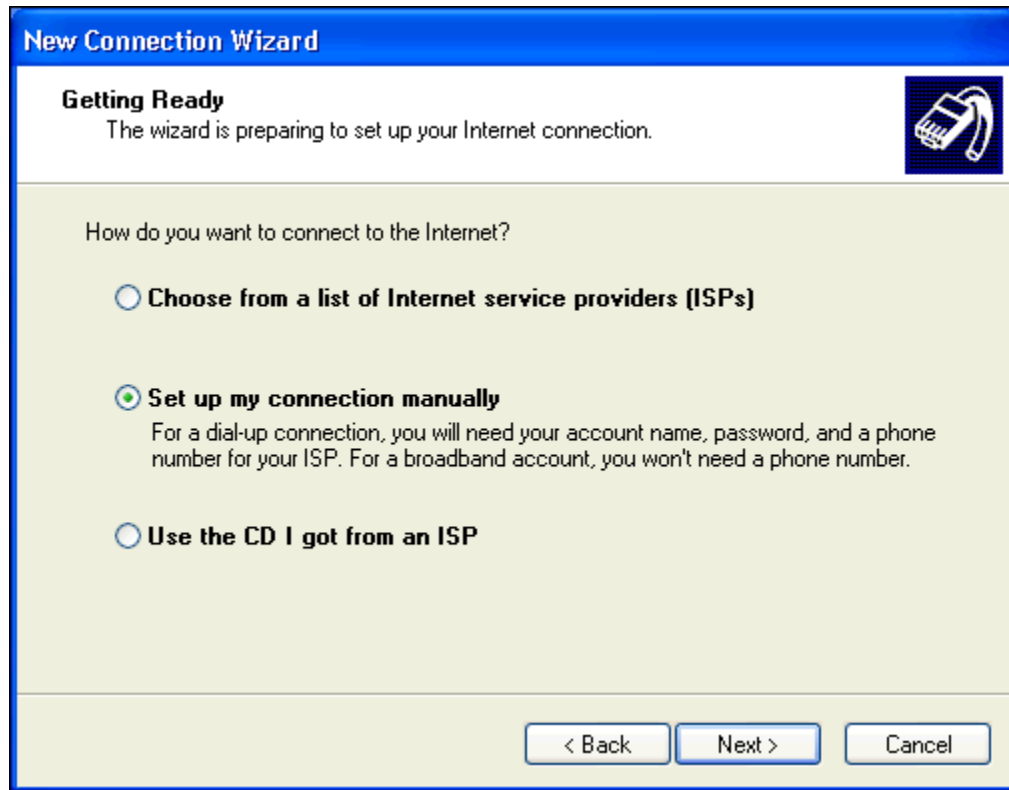
Otvorice vam se dijalog u kome kliknete na Next



Odaberite opciju Connect to the Internet i kliknite na Next



Odaberite Set up my connection manually i kliknite na Next



Odaberite Connect using a dial-up modem i kliknite na Next

**New Connection Wizard**

**Internet Connection**  
How do you want to connect to the Internet?




- Connect using a dial-up modem**  
This type of connection uses a modem and a regular or ISDN phone line.
- Connect using a broadband connection that requires a user name and password**  
This is a high-speed connection using either a DSL or cable modem. Your ISP may refer to this type of connection as PPPoE.
- Connect using a broadband connection that is always on**  
This is a high-speed connection using either a cable modem, DSL or LAN connection. It is always active, and doesn't require you to sign in.

< Back   Next >   Cancel

Unesite neki naziv za konekciju (npr. 042 Internet) i kliknite na Next

**New Connection Wizard**

**Connection Name**  
What is the name of the service that provides your Internet connection?



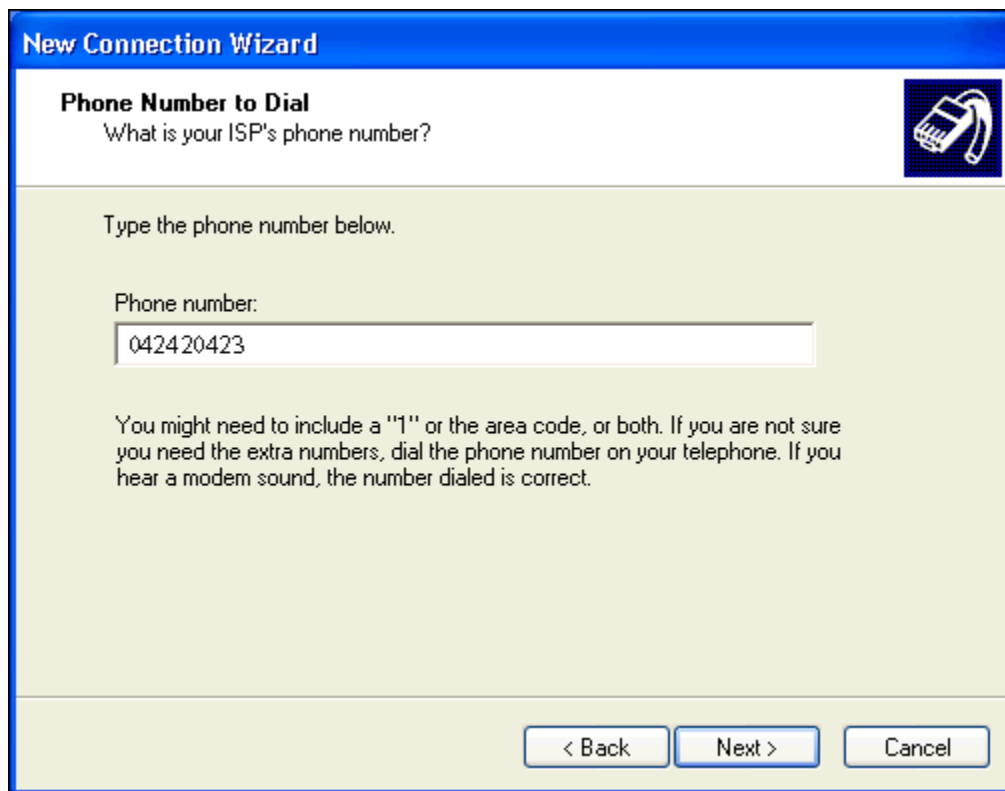
Type the name of your ISP in the following box.

ISP Name

The name you type here will be the name of the connection you are creating.

< Back   Next >   Cancel

Ukucajte broj telefona 042 420 423 (bez razmaka) i kliknite na Next



The image shows a screenshot of a Windows-style dialog box titled "New Connection Wizard". The main heading is "Phone Number to Dial" with a sub-question "What is your ISP's phone number?". A small icon of a mobile phone is in the top right corner. Below the heading, it says "Type the phone number below." followed by a text input field labeled "Phone number:" containing the text "042420423". A paragraph of instructions follows: "You might need to include a '1' or the area code, or both. If you are not sure you need the extra numbers, dial the phone number on your telephone. If you hear a modem sound, the number dialed is correct." At the bottom, there are three buttons: "< Back", "Next >", and "Cancel".

U polje Username ukucajte internet

U polja Password i Confirm password ukucajte net i kliknite na Next

**New Connection Wizard**

**Internet Account Information**  
You will need an account name and password to sign in to your Internet account.

Type an ISP account name and password, then write down this information and store it in a safe place. (If you have forgotten an existing account name or password, contact your ISP.)

User name:

Password:

Confirm password:

Use this account name and password when anyone connects to the Internet from this computer

Make this the default Internet connection

Turn on Internet Connection Firewall for this connection

< Back   Next >   Cancel

Klikom na Finish kreirali ste novu konekciju. Preporucljivo je prethodno cekirati polje Add a shortcut to this connection to my desktop , da bi vam se kreirala ikonica za novu konekciju na desktopu.

New Connection Wizard



## Completing the New Connection Wizard

You have successfully completed the steps needed to create the following connection:

**042 Internet**

- Use as the default connection
- This connection is firewalled
- Share with all users of this computer
- Use the same username password for everyone

The connection will be saved in the Network Connections folder.

Add a shortcut to this connection to my desktop

To create the connection and close this wizard, click Finish.

< Back    Finish    Cancel

[www.042internet.net](http://www.042internet.net)